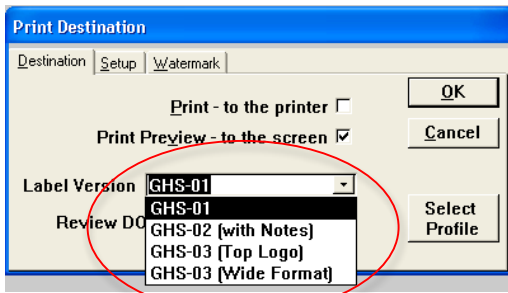
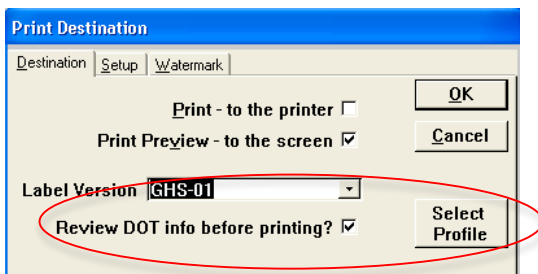


2. New GHS compliant label templates are included. These include the most popular features of the prior non-GHS labels:



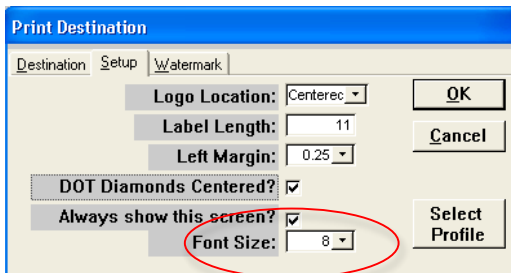
We encourage you to try the different formats to find the best solution for your business. If you need additional templates, just ask.

3. There are two additional features on this screen that you may have missed: The DOT label review and the ability to change profiles while printing without going back to the Main Menu and System Settings:



If you choose to review the DOT information before printing, you have the option to change the DOT Label (Diamonds), pictograms, UN number, hazard class, etc. This is particularly useful on multi-component mixtures where the shipping description can easily be shortened.

4. The Setup tab in the Print Destination screen now allows you to change the size of the warning text for the label:



This becomes important when the mixture contains many ingredients or ingredients with significant hazards. By adjusting the size of the label text, you can more easily put the entire label on one sheet.

5. SDS integration:



Safety Data Sheets can be dynamically created right from the Specialty Gas Manager. When you press the SDS button, the mixture is automatically transferred to the SDS Manager website. Then, on the SDS Manager website you can download your custom SDS back to your computer. A separate subscription is needed for this integration to work. If you press the SDS button and an error message appears, simple let us know and we can set you up with a trial SDS Manager account subscription.

6. GHS logic – In addition to standardized label text, the new pictograms appear on the label when needed. These are included as specified in the US OSHA GHS requirements. If you need support for other countries' GHS standards, you can adjust the label on the label review screen or advise us on the necessary revisions.
7. Mixture safety classifications. We have strengthened the traceability of the mixture safety classifications. For example, we have always used CGA P-23 for determining flammability. For a few years we have used ISO 10338 to determine the corrosive potential of mixtures. We now have added ISO 10156 support to determine the oxidizing potential of mixtures. This may result in mixtures being classified differently from before. If you have any questions about the safety classification of a mixture, just let us know.
8. Specific mixture cautions. We have added a safety message when a mixture containing carbon monoxide and carbon dioxide is made in a steel cylinder. We have added logic that warns you when known acidic and basic gases are included in the same mixture recipe. If you are aware of other potentially hazardous mixtures, please let us know.

Tom Badstubner
Phone: 1-508-883-0927
Fax: 1-508-883-3558
E-Mail: Tom@AsteRiskLLC.com